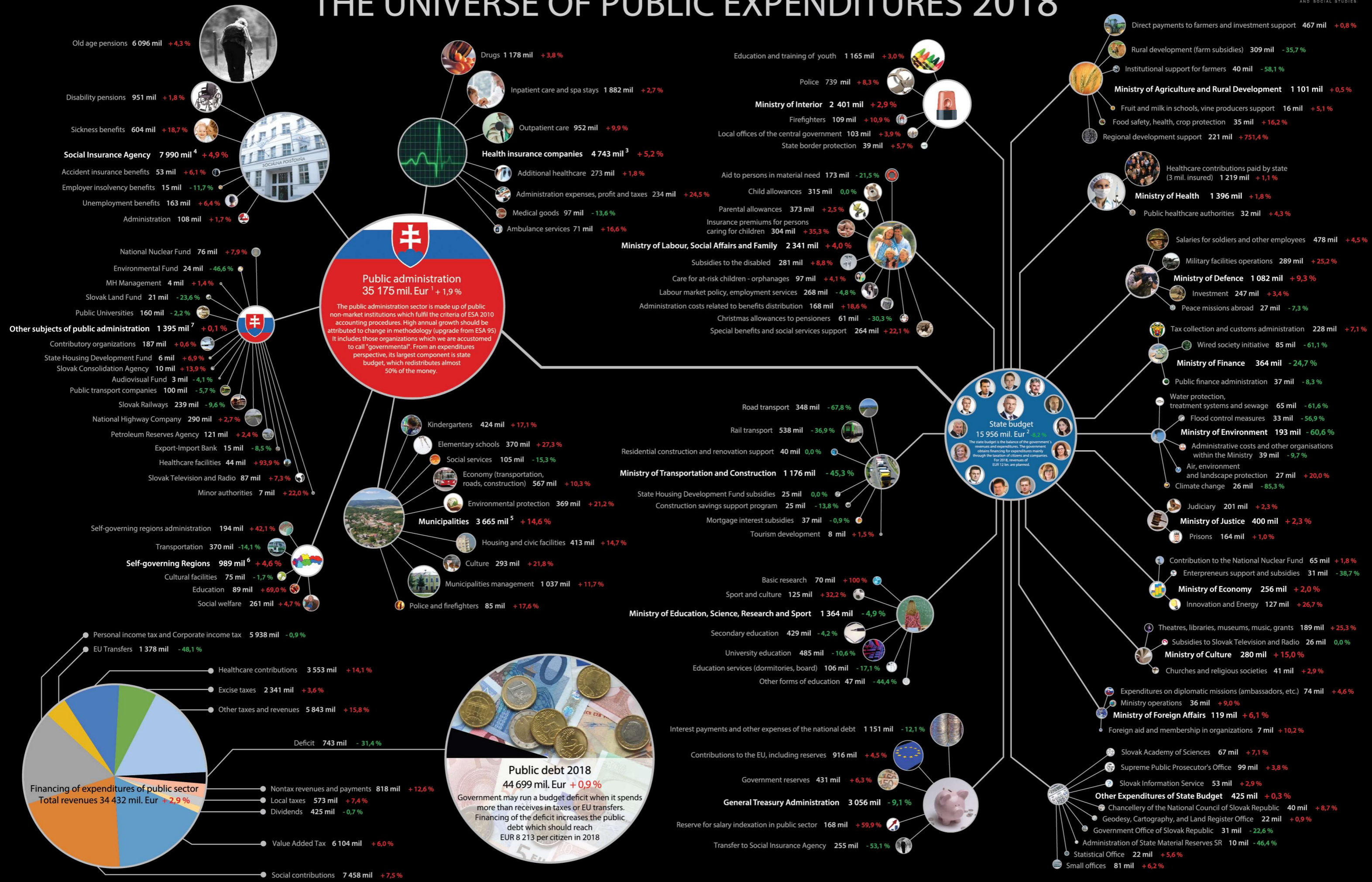


THE UNIVERSE OF PUBLIC EXPENDITURES 2018



1. The public administration sector, per the ESA 95 methodology, covers nearly all "state" institutions.
 2. The total of the ministries' expenditures shown is lower than their full expenditures. For the sake of brevity and clarity, we show only the main expenditure categories.
 3. Value shown also contains contributions paid from taxes by the Ministry of Health for selected insureds. Besides taxes, citizens pay contributions of EUR 3.5 bn. to insurers.
 4. Value shown also contains contributions of EUR 255 m. from General Treasury Administration and contributions of EUR 304 m. paid from taxes by the Ministry of Labor, Social Affairs and Family for selected insureds. Besides taxes, citizens pay contributions of EUR 7.2 bn. to Social Insurance Agency.
 5. Municipalities' total as well as specific expenditures are indicative and reduced by the value of transfers already accounted for in expenditures of the state budget. Together with subsidies, municipalities' overall expenditures reach EUR 4.7 bn.
 6. Total expenditures are reduced by the value of transfers already accounted for in expenditures from the state budget. Together with subsidies, self-governing regions' overall expenditures reach EUR 1.5 bn.
 7. Data are purged of expenditures accounted for under other public administration headings and loans provided. The unconsolidated value of expenditures would reach EUR 6.1 bn.

Information presented sourced from budgetary documents available at the Ministry of Finance website and from ministerial budgets.
 The authors took inspiration for the diagram from www.wallstats.com

This project could be realized thanks to:
 NADACIA
 TATRA BANKY